



balance bikeTM

Updated Instruction Manual

(Please disregard instructions inside package)

This Package Contains



Allen Wrench



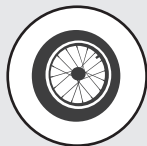
Wrench



Fork



Seat



Front Tire



Handlebars
w/ Brake



Frame w/
Rear Brake



Fastener

Balance Bike Instruction Manual

ASSEMBLY

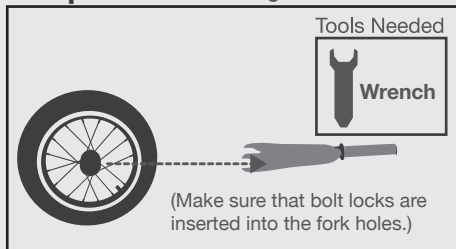
For video instructions please
scan the QR code:

or visit
www.balancebike.com

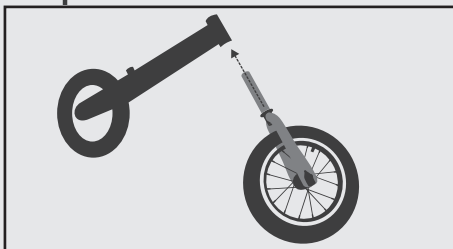


10 minute
assembly

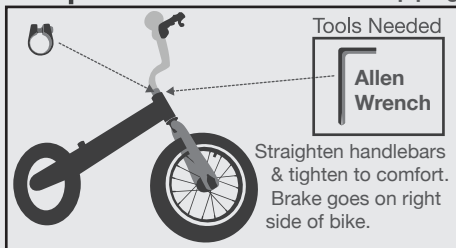
Step 1: Loosen bolts on tire & attach
fork to tire. Tighten bolts.



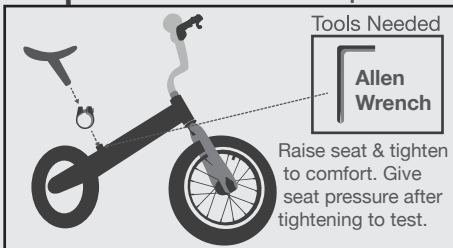
Step 2: Insert fork into front of frame.



Place fastener around fork piping.
Step 3: Insert handlebars into fork piping.



Insert seat to seat piping. Tighten
Step 4: the fastener to lock in place.



WARNING: Ride at your own risk